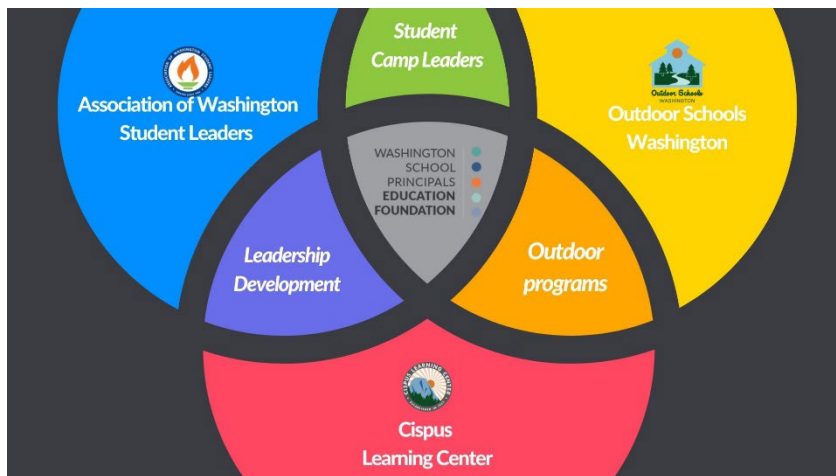




The foundation for Washington schools, their students and leaders.



Mission:

Provide needed resources for schools and school leaders in support of EVERY student to excel inside and outside of the classroom through extraordinary learning opportunities.

Vision:

We share the vision where students achieve success through out-of-the-box thinking, unique opportunities and access to inspiring possibilities; and where the communities, large and small, work together in support of schools across Washington state.

We believe children at all grade levels have potential to become leaders in their neighborhoods, schools, and communities. Through social/emotional learning and environmental education, we approach the needs of the whole child, striving to support and improve their growth in the social and academic domains.

Our practices are planned, implemented, and evaluated through the lenses of justice, equity, and inclusion. Just as diversity is an indicator of environmental health, it is how we judge our organization's health as well.

Time spent in the out-of-doors at our Cispus Learning Center connects children with the environment, helping them develop the mindset of stewardship and conservation. As students learn about their place in the natural world, they also discover a future for themselves, as advocates, organizers, and those who find their life's calling in environmental work.

Through AWSL, we are purposeful in our development of students as leaders, helping them to find the power of their voices. We encourage and support them, as they become influences for good in their communities, their cultures, and ultimately, the world.

The purpose of the foundation shall include but not be limited to:

- a) Supporting improvement and development of the Pre-K through 12 educational programs;
- b) Improving communication and promoting continuity and purpose among stakeholder principals' groups;
- c) Encouraging and promoting research designed to enhance educational knowledge;
- d) Providing educational benefits to individual students through leader development, access and opportunities; and
- e) Providing and supporting outdoor learning centers so students (Pre-K through 12) may be involved in environmentally-related learning experiences that are interdisciplinary in nature and environmental curriculum programs and evaluation designs may be developed and field-tested.

